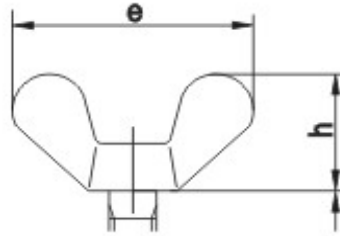


**DIN 316**



Wymiar	M 4	M 5	M 6	M 8	M 10	M 12	M 16
d <sub>2</sub>	7	9.5	11.5	14.5	18.5	21.5	27.5
e	20	25	31.5	37	49.5	63.5	71.5
g	1.5	1.9	1.9	2.4	4	4.5	6
h	9.5	12	16	19	24	32.3	36.3
m	3.9	5.3	6.5	8.3	10	12	15

