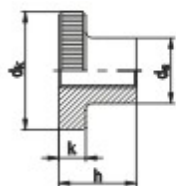
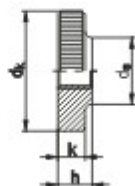


DIN 466



DIN 466 = wysokie



DIN 467 = niskie

Wymiar	M 3	M 4	M 5	M 6	M 8	M 10	M 12*
d_k	12	16	20	24	30	36	35
d_s	6	8	10	12	16	20	20
k	2.5	3.5	4	5	6	8	8
$h_{DIN 466}$	7.5	9.5	11.5	15	18	23	23
$h_{DIN 467}$	3	4	5	6	8	10	10

